

Christian Reid
Estate Agents



Guildford

£1,295pcm

Jordans Close, Guildford, GU1 2PB



2 Bedrooms



1 Receptions



1 Bathrooms

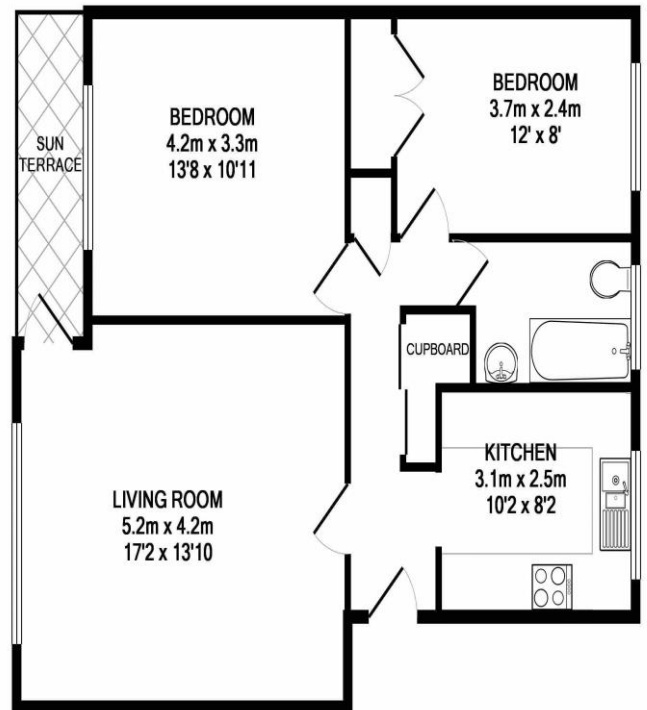


Ground Floor



EPC: D

A Spacious & Beautifully Presented Ground Floor Apartment | Quiet Cul-de-sac Location | Two Large Bedrooms | Modern & Spacious Living/Dining Room | Modern Kitchen & Bathroom | Available Now



TOTAL APPROX. FLOOR AREA 64.8 SQ.M. (697 SQ.FT.)

Whilst every attempt has been made to ensure the accuracy of the floor plan contained here, measurements of doors, windows, rooms and any other items are approximate and no responsibility is taken for any error, omission, or mis-statement. This plan is for illustrative purposes only and should be used as such by any prospective purchaser. The services, systems and appliances shown have not been tested and no guarantee as to their operability or efficiency can be given

Made with Metropix ©2019